

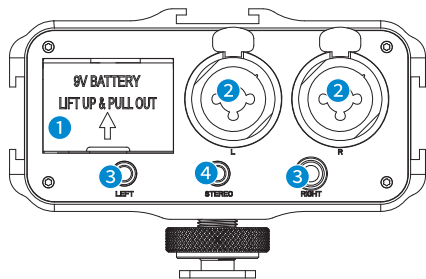
## Product Introduction

### General Introductions

The Saramonic SR-PAX1 is a two-channel audio mixer with phantom power, specially designed for mirrorless digital camera, DSLR camera and camcorder with a microphone jack. It is a compact and lightweight mixer ideal for recording professional quality audio from two sources and mixing them into your camera.

With two sets of inputs, the SR-PAX1 accepts signals from a wide variety of mic or line level sources such as balanced XLR microphones, wireless microphones, guitars, or any musical instruments with a 6.35mm connector. The 3.5mm inputs are also ideal for connecting audio devices with a 3.5mm output such as a smart phone or an MP3 player. The input levels of each channel can be easily controlled with the dual control knobs. A phone jack allows you to monitor the audio in real time. The SR-PAX1 makes your recording work much easier.

### Product Structure



#### 1 Battery compartment

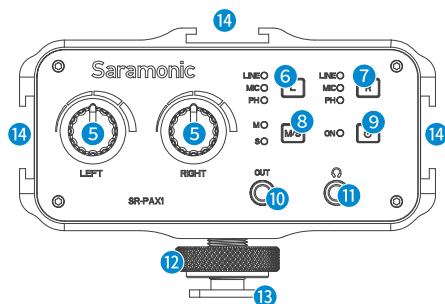
Operates on a 9 volt battery (not included). You could use a lithium type battery for longer operating time.

#### 2 For microphone: two balanced XLR inputs.

For guitar: two 1/4" (6.35mm) mono standard inputs.

#### 3 Left and right mono 1/8" (3.5 mm) mini-Jack inputs.

#### 4 Stereo 1/8" (3.5 mm) mini-Jack input.



#### 5 Dual Trim Control Knobs

Adjust the signal of each channel to the optimum recording levels.

#### 6 Left Channel Control Button

Control the inputs of left channel. Select LINE or MIC or Phantom level for the left channel.

#### 7 Right Channel Control Button

Control the inputs of right channel. Select LINE or MIC or Phantom level for the right channel.

#### 8 Mono/Stereo Button (M/S)

When recording one channel, please use the mono(M) setting. The signal will be sent to both left and right channels. When recording two channels, please use the stereo(S) setting. The level of each channel can be controlled individually.

#### 9 Power Button

Main power switch for SR-PAX1.

#### 10 Output (OUT)

Stereo 1/8" (3.5 mm) output jack. Use the included signal transmission line to send the audio signal from the adapter to your camera.

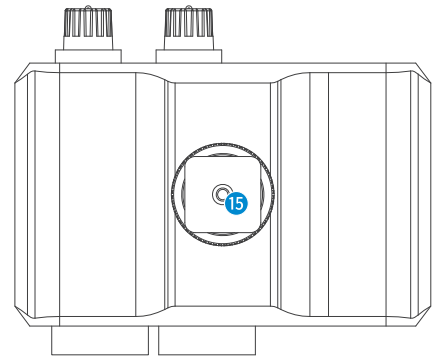
#### 11 3.5mm Headphone Output for Monitoring

#### 12 Lock Knob

#### 13 Standard Cold Shoe

#### 14 Three Integrated Mounting Shoes

Attach a variety of microphones or other accessories.



#### 15 1/4" Female Screw hole

### Specification

|                    |   |
|--------------------|---|
| Input              | XLR & 6.3mm jacks x2<br>1 /8" (3.5 mm) jacks x3                                 |
| Output             | 1/8" (3.5 mm) jacks x1  |
| Phone              | 1/8" (3.5 mm) jacks x1  |
| Frequency Response | 20 Hz to 20 KHz, +/-1 dB  |
| THD                | Less than 0.01% @ 1 kHz, -30 dBu input  |
| SNR                | 74dBu @ 1 kHz, -30 dBu input  |
| L & R Gain         | LINE: -30dBu<br>MIC: 0dBu<br>MIC/PH: 0dBu                                       |
| Phantom Power      | for XLR jacks: 48V power supplies<br>for 1/8" (3.5 mm) jacks: 5V power supplies |
| Power Indicator    | Power on: LED indicator in blue<br>Low battery: LED indicator in red            |
| Power Requirements | 9 V alkaline or lithium battery (Not included)                                  |
| Weight             | 357g  |
| Dimensions         | (L×W×H) 101.2mm × 85.0mm ×65.5mm  |

### Set Up Guide

#### 1 Install the battery.

Lift up and pull out the drawer from the battery compartment. Insert 9V battery into place aligning + and - polarity as shown. Slide the drawer closed until it clicks into place.

#### 2 Mount the SR-PAX1 on your camera's hot shoe. Spin counter-clockwise to tighten up the mixer with the camera. Or mount the mixer to a tripod with the tripod socket on the bottom of the mixer.

#### 3 Connect the supplied signal transmission line from the output jack (OUT) of mixer to the MIC input of camera. If there is a Mic/ Line switch on the camera, select it to Mic.

#### 4 Connect microphones to the XLR inputs or 3.5mm inputs, or other audio sources to the 6.35mm inputs.

#### 5 Long press the power button to turn on the SR-PAX1.

#### 6 Set the LINE/MIC/PH buttons.

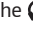
When using self-powered microphones and wireless systems, set to MIC for microphone.

When using guitar or other audio devices, please set to LINE.

When using microphones operating on phantom power, please set to PH for phantom power. 5 volt phantom power is offered for 3.5mm microphone jacks and 48 volt phantom power is offered for XLR jacks.



**NOTE:** Please DO NOT set to PH when recording with microphones that do not operate on phantom power, like wireless receivers, mixing boards or any unbalanced device, because it may damage both the mixer and audio device.

- ⑦ Set the M/S switch according to your needs. Please refer to Product Structure ③ Mono/Stereo Button.
- ⑧ Set the volume control knobs to low to avoid excessively loud audio from damaging your hearing. Plug an headphone into the  phone jack to monitor the sound.
- ⑨ We suggest you to do a test recording and playback the audio to see if it is acceptable. When testing, you could adjust the knobs flexibly to get the the optimum signal levels.

#### Packing List

One SR-PAX1 main unit  
 One signal transmission line  
 User manual  
 Warranty card



## TWO-CHANNEL AUDIO MIXER WITH PHANTOM POWER

The SR-PAX1 is specially designed for mirrorless digital camera, DSLR camera and camcorder with a microphone jack. It is ideal for recording professional quality audio from two sources and mixing them into your camera.

[www.saramonic.com](http://www.saramonic.com)

The Saramonic logo is trademark which is registered and owned by Saramonic International.

COPYRIGHT 2011-2021 SARAMONIC INTERNATIONAL  
 ( A brand of DSQN )

Email: [info@saramonic.com](mailto:info@saramonic.com)